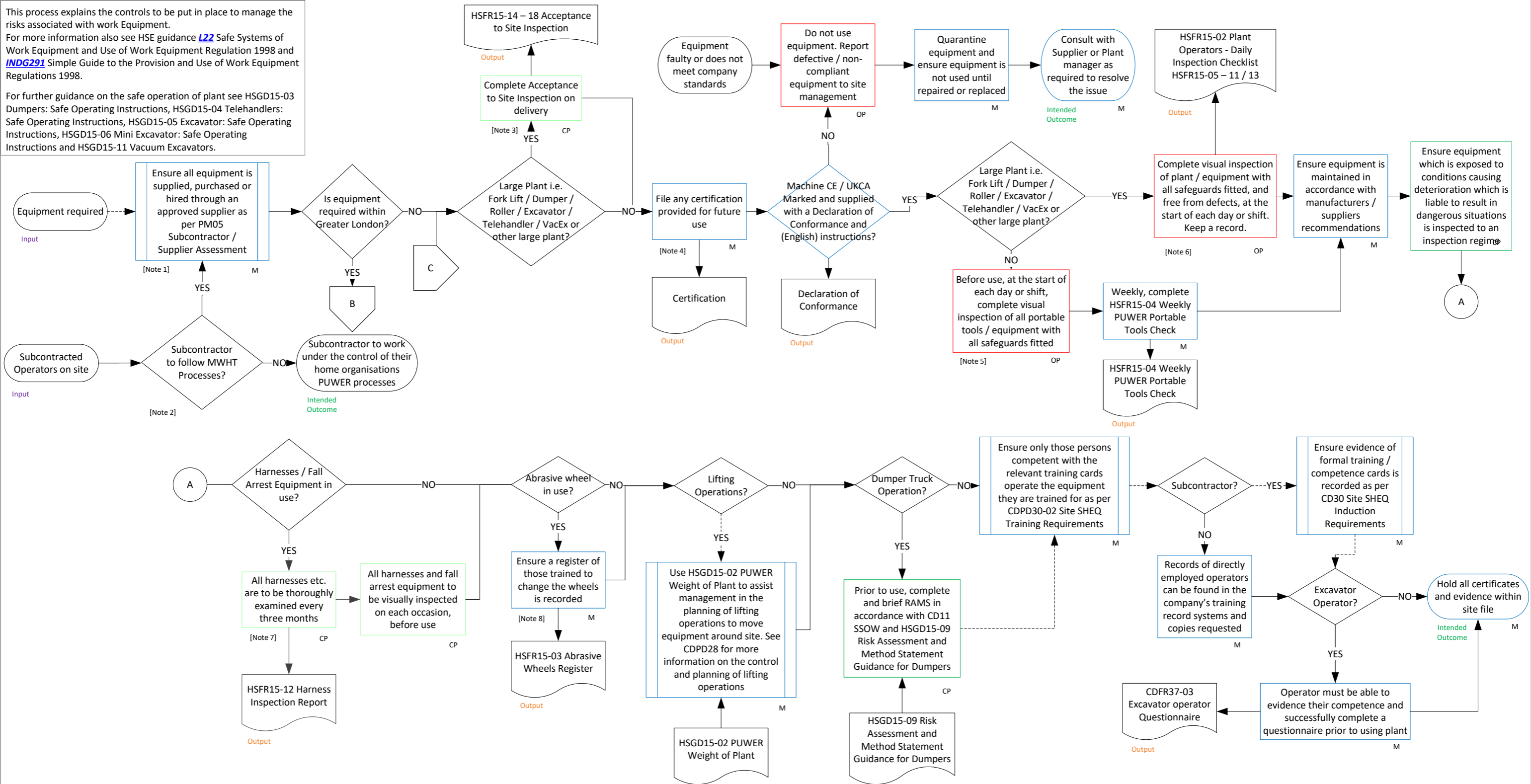


Scope:
 This process explains the controls to be put in place to manage the risks associated with work Equipment.
 For more information also see HSE guidance [L22 Safe Systems of Work Equipment](#) and Use of Work Equipment Regulation 1998 and [INDG291 Simple Guide to the Provision and Use of Work Equipment Regulations 1998](#).
 For further guidance on the safe operation of plant see HSGD15-03 Dumpers: Safe Operating Instructions, HSGD15-04 Telehandlers: Safe Operating Instructions, HSGD15-05 Excavator: Safe Operating Instructions and HSGD15-11 Vacuum Excavators.



RESPONSIBILITIES		
MANAGERS M	OPERATIVES OP	COMPETENT PERSON CP

REVISION 7 MAY 2026	IFS DOC NO: HSPD/1468222
REVIEWED BY: C PRICE	AUTHORISED BY: Z ROBERTSON

Associated Regulations:
 Provision and Use of Work Equipment Regulations 1998
 Non-Road Mobile Machinery (Emissions of Gaseous and Particulate Pollutants) Regulations 1999

Definitions:
 CAZ Central Activity Zone (London)
 GLA Greater London Authority
 Manager for the purpose of this process includes Site Managers / Supervisors and Managers Responsible for office and stored.
 NRRMM Non-Road Mobile Machinery
 PUWER Provision and Use of Work Equipment Regulations
 Safeguard includes guards, interlocks, two-hand controls, light guards, pressure-sensitive mats etc.
 Work Equipment the scope of 'work equipment' is extremely wide. It covers almost any equipment used at work, including:

- Toolbox Tools (e.g. hammers, knives, handsaws etc.),
- single machines (e.g. drilling machines, circular saws, photocopyers);
- Apparatus such as laboratory apparatus (e.g. Bunsen Burner etc.)
- lifting equipment (e.g. hoists, lift trucks, elevating work platforms etc.)
- other equipment (e.g. ladders, pressure water cleaners etc.)
- An installation such as series of machines connected together, (e.g. paper making line or enclosure for providing sound insulation or scaffolding) [except where CDM imposes more detailed requirements.

NOTES

Note 1 Equipment that falls within PUWER shall meet the MWHT company standards as outlined in HSGD15-01 Plant Tools and Equipment PUWER Guidelines and HSGD15-07 Plant and Equipment Minimum Standards Summary. The controls required to be in place will be dependent on the risk level to ensure that low risk equipment is not subjected to the same levels of control as medium to high risk.

Note 2 Subcontractors are to follow this process unless their procedures are deemed by MWHT to be above MWHT standards.

Note 3 See list of plant specific checklists: HSF15-05 Dumper Daily Inspection Checklist; HSF15-06 Excavator Daily Inspection Checklist; HSF15-07 Roller Daily Inspection Checklist; HSF15-08 Telehandler Daily Inspection Checklist; HSF15-09 Mobile Elevated Work Platform (MEWP); HSF15-11 Fork Lift Truck Daily Inspection Checklist; HSF15-13 Vacuum Excavator Checklist. These checklists should be used in place of the generic HSF15-02 Daily Inspection Checklist where applicable.

Note 4 The majority of plant equipment is supplied with a certificate of conformity or a certificate of thorough examination

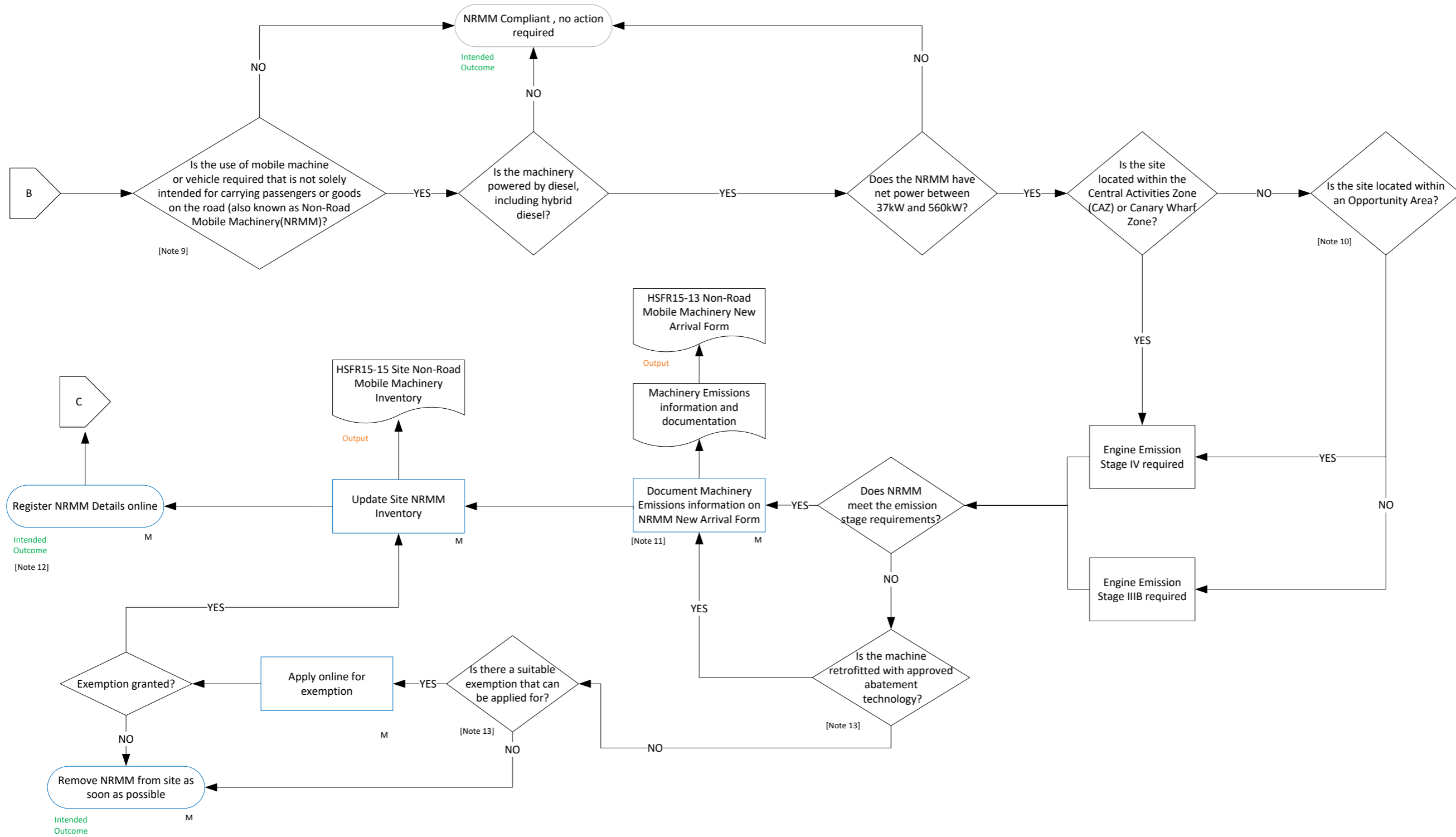
Note 5 Portable tools such as hand tools, require an inspection to be carried out. Where there is a requirement to record such inspections HSF15-04 Portable Tools Check may be used.

Note 6 See list of plant specific checklists: HSF15-15 Excavator Pre Use Inspection Checklist; HSF15-16 Telehandler and Fork Lift Pre Use Inspection Checklist; HSF15-17 Mobile Elevated Working Platforms Pre Use Inspection Checklist; HSF15-18 Vacuum Excavator Pre Use Inspection Checklist. These checklists should be used in place of the generic HSF15-14 Plant Operators - Pre Use Inspection Checklist.

Note 7 All harnesses etc. shall have a formally recorded inspection undertaken at least every 6 months. However, for frequently used equipment it is suggested that this is increased to at least every three months, particularly when the equipment is used in arduous environments (e.g. demolition, steel erection, scaffolding, steel masts/towers with edges). Interim inspections may be needed between detailed inspections where the employer's risk assessment has identified a risk that could result in significant deterioration, affecting the safety of the lanyard before the next detailed inspection is due.

Note 8 Abrasive wheels must only be replaced by a suitably trained operative

General Note This process is subject to revision. The current revision is available on IFS and Company Intranet. This copy is uncontrolled if printed. Company Procedures are the property of MWHT and are confidential. They must not be copied or lent to a third party without prior permission from a SHEQ Manager or Director.



RESPONSIBILITIES		
MANAGERS M	OPERATIVES OP	COMPETENT PERSON CP

REVISION 7 MAY 2026	IFS DOC NO: HSPD/1468222
REVIEWED BY: C PRICE	AUTHORISED BY: Z ROBERTSON

NOTES

Note 9 Such mobile machine or vehicle includes, but is not limited to: telehandlers, MEWPs, access platforms, dumpers, piling rigs, excavators, bulldozers, compressors, generators, mobile cranes, concrete pumps, and rollers.

Note 10 Opportunity Areas are defined and identified on the following website: <https://www.london.gov.uk/what-we-do/planning/implementing-london-plan/opportunity-areas>

Note 11 Although designated as "Manager" responsibility, the responsibility for collating NRMM compliance data and submitting it on the GLA online NRMM Register may be delegated to another individual. The individual responsible should be listed on HSFRO1-01 Construction Phase Plan - Appendix 6 Duty Holders List).

Note 12 The GLA NRMM online register can be found at <http://nrmm.london/> and a user profile account will need to be setup in order to setup the site and log all NRMM machinery online.

Note 13 For further information on approved abatement technology and NRMM exemptions, see HSGD15-09 Non-Road Mobile Machinery Requirements.