

The Theme for March 2020 is: Protection of Trees and Hedgerows

Your Health and Safety

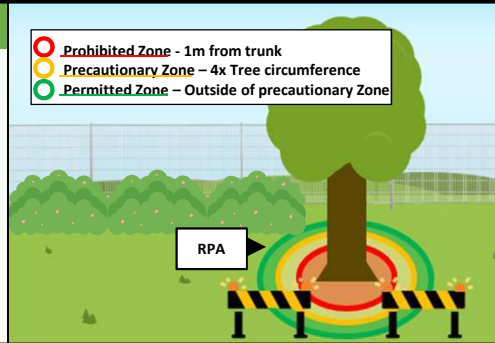
Our Environment

Quality Requirements

Damaging hedgerows and trees (such as branches and roots) can have a significant environmental impact and could affect protected species. Due to this it is essential that before working on or near trees or hedgerows you consider the following:

1. Protection of Trees and Hedgerows

- A **Tree Protection Plan** may be required when working near trees.
- It is an offence to work on / damage a tree with a **Tree Preservation Order** without Local Authority permission and land owner (where applicable).
- Install tree protection fencing** around the Root Protection Areas (RPAs) as appropriate. No works, vehicle movements, or storage within this RPA, unless an Environmental Advisor / Arborist provides consent.



2. Planning

- Check if there are any ecology considerations** (e.g. red squirrels, bats).
- No tree or hedgerow removals or pruning should be undertaken during Nesting Bird season (March – Sept) without a prior ecology check.
- Obtain landowner's permission prior to any tree works.
- If nesting birds are found, stop work immediately and Report IT!



3. Pre-Commencement

- A **Tree Removal Plan** to detail RPAs, felling and protection recommendations.
- Risk Assessments and Method Statements** to be reviewed by a H&S and Environmental Advisor(s). Incorporate the Environmental Rules [EVRU01-32 Working near Trees](#) or [EVRU01-38 Nesting Birds](#).
- Agree with Arborist and landowner the disposal of felled trees / branches - can they be reused?



4. Subcontractors

- Felling and removal of trees and hedgerows must be conducted by a **competent arborist**.
- Subcontracts **must** be in place for all tree / hedgerow removal work prior to commencement (see [PMPR03](#)).
- Hold a **pre-commencement meeting** and record on [CDFR16-02 Subcontractor Pre-Commencement Meeting Record](#).
- Complete toolbox talks [Working Around Trees](#), [Working around Hedgerows](#) and/or [Nesting Birds](#).



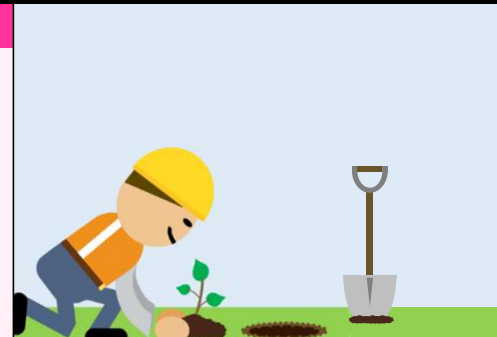
5. Carrying Out Works

- Using chainsaws, wood chippers, strimmers etc. is high risk. Use specialists with correct training, experience and equipment.
- Using these is **high risk**. Engage specialists with correct training, experience and equipment.
- Maintain **exclusions zones**, with only the equipment operator in the zone.



6. Completion and Replanting

- Check planning conditions for specific requirements.
- If landscaping, complete a C18 Landscape & Fencing Test Sheet (in the Inspection & Test Plan).



For further information refer to the environmental guidance note: [EVGD01-32 Protection of Trees and Hedgerows](#). Display the [MWHT Tree Poster](#) on site where appropriate.