

## Theme of the Month (August 2025) – Env Focus Week 4 - Construction Phase Plans and CDM Drawings

There have been several incidents and significant near misses regarding Ecology. Root causes include ensuring site-specific environmental requirements are covered in key construction delivery documentation.

Following recent incidents and near misses, all teams must review and update their CPPs to reflect current risks, control measures, and site conditions. CDM drawings should include Wildlife Exclusion Zones.

### Purpose of the CPP Review:

- ✓ To ensure site specific documentation reflect the environmental requirements and are up-to-date.
- ✓ To incorporate environmental risks (particularly exclusion areas) into site layout drawings.
- ✓ Embed and sequence works to incorporate pre-commencement environmental checks

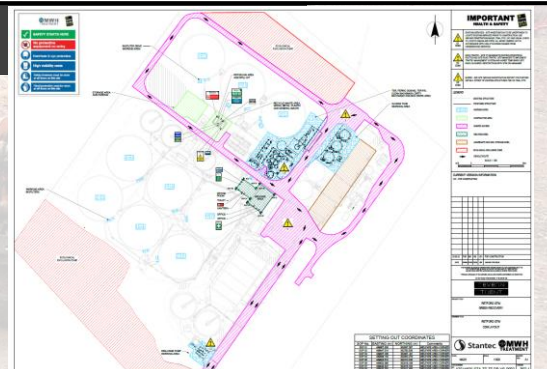
### When reviewing the CPP does it include:

- **Environmental Constraints Map** – Are you aware of any wildlife exclusion zones, statutory designations, permit conditions, non-native species and potential bird nesting locations on your site?
- **Survey updates and outcomes** – Has there been any changes to environmental risks from the pre-start surveys?
- **Method Statements** – Do they include environmental risks and control measures related to the activity and location of works?
- **Sequencing** – Has any vegetation clearance e.g. with ecologist attendance, been incorporated into the programme?

### CDM Drawings / Site Layout Drawings

Review the CDM (Construction (Design and Management)) site layout drawings - this is a key document to review particularly with any design changes. Need to check:

- Is it up to date?
- Does it include key environmental risks that could impact upon the layout? Check the EMP.
- Does it include any exclusion zones e.g. for wildlife, invasive plants and/or tree root protection zones?



### What do we need you to do?

1. Review of the Construction Phase Plan to ensure it aligns with the Environmental Management Plan and key risks / control measures are incorporated into the CPP.
2. CDM drawings/site layouts to include any key environmental risks/wildlife exclusion areas.

**STOP PAUSE  
UPDATE THE CPP**

- **Check the CPP:** Does it reflect current legal, client and planning requirements?
- **Reassess Risk:** Have new site hazards or changes in conditions been captured in the CPP?
- **Strengthen control measures:** Are the measures in the CPP still effective, practical and being applied on site?
- **Communicate changes:** Re-brief all personnel and contractors on CPP updates.
- **Include in drawings:** Ensure wildlife exclusion zones are incorporated in appropriate site layout drawings (including Environmental Constraints Map) and contractors have a copy. Are they clear where is off limits?
- **Training:** Are the staff working in a location competent?

