

Learning Alert 25-04 Lost Time Incident – Roundhill Injured Elbow

The following Safety Alert contains content from an external source which is relevant to MWH Treatment Operations

What Happened?

Whilst working on an open mesh floor covering to the TSR at Roundhill a pipework fitter stood on an unsecured piece of open mesh flooring hatch, (approx. size 250mm x 250mm) which fell through the floor. The fitter's fall was broken by his elbow with the right elbow taking the brunt of the impact. Medical examination showed no fracture to the elbow but has resulted in the IP being unable to work for more than 7 days and is therefore a RIDDOR reportable incident.

Pictures

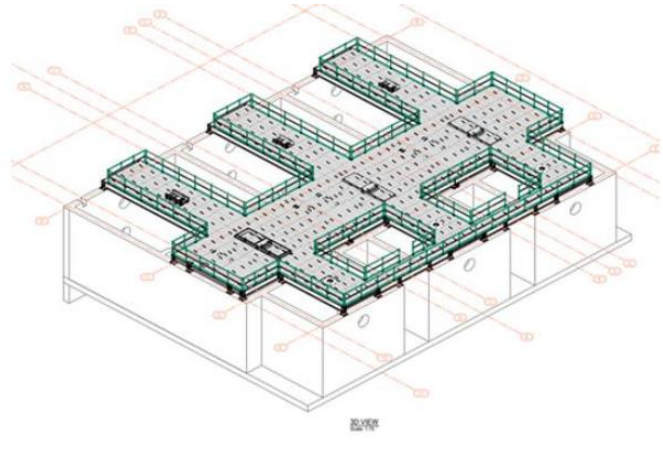
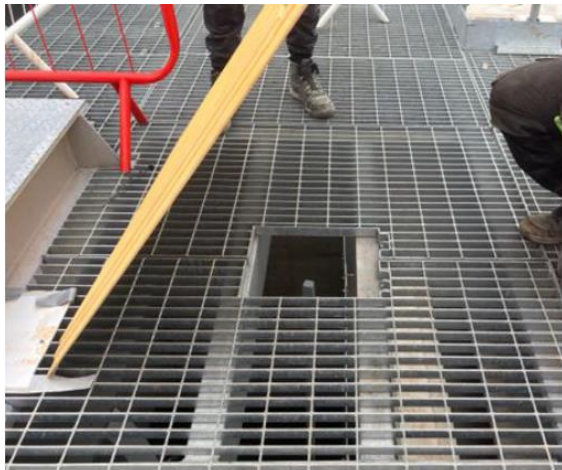


Photo 1: Hole (being covered by temporary floor)

Photo 2: Roof area

Root causes

- The hatch hinges were not seen as a priority task to complete by the subcontractor. It was not perceived as a big risk and were left off daily job lists.
- An adjacent piece of flooring had been approved for modification, but these changes were not checked against design drawings for any potential clashes.
- Time Vs Risk. There was an opportunity to save time by using a different contractor for the modification. This was not subject to a quality check post modification.
- This work area was “permanent works in a temporary state” and was not safe. It is common practice to not manage permanent works under temporary works process.
- Protective foot plates were put in place in the area to cover the unsecured hatches, but these items were not managed in line with our temporary works procedures.

Learning

- Check all permanent works in a temporary state has been identified and manage the SHEQ risks in line with the Temporary Works process.
- As part of Contracts Managers' checks ensure all items are on the Temporary Works Register and are suitably managed.
- Where opportunities to save time present themselves, get considered opinion on the potential SHEQ risks involved. Consult our Design team where appropriate.

